



Impress your customers day and night – with HALOGEN ENERGY SAVER lamps.

The new ENERGY SAVER halogen lamps from OSRAM
offer cost savings of up to 65 %.

RANGE
EXTENDED

ENERGY
SAVER

SEE THE WORLD IN A NEW LIGHT

OSRAM



A brilliant idea: ENERGY SAVER halogen lamps from OSRAM.

OSRAM has brought energy savings to halogen lamps. Our innovative HALOGEN ENERGY SAVER lamps catch the eye not only because of their high luminous intensity, excellent quality of light and constant color but also because they save up to 65 % in costs compared with conventional halogen lamps.

The technology makes the difference: IRC and Xenon.

The secret of the innovative HALOGEN ENERGY SAVER lamps from OSRAM is in the modern lamp technologies. IRC and Xenon ensure that energy savings of up to 30 % are achieved compared with standard halogen lamps.

IRC reduces energy losses due to thermal radiation.

A special infra-red coating on the inside of the bulb reflects the heat back to the filament. This means that less energy has to be supplied from outside to keep the filament at its operating temperature.

Xenon reduces heat losses through the filler gas.

The inert gas Xenon has low thermal conductivity. This reduces the heat loss of the tungsten filament via the filler gas, so less electrical energy is needed to heat the filament.

All the benefits of HALOGEN ENERGY SAVER lamps at a glance.

- Up to 65 % cost savings
 - Higher luminous efficacy
 - Lower power consumption
 - Lower thermal output
 - Significantly lower CO₂ emissions
 - Efficient light source (R_a 100) with true color rendering
 - Fully dimmable
 - No special precautions needed for their disposal;
- for further information go to:

www.osram.com/global-care



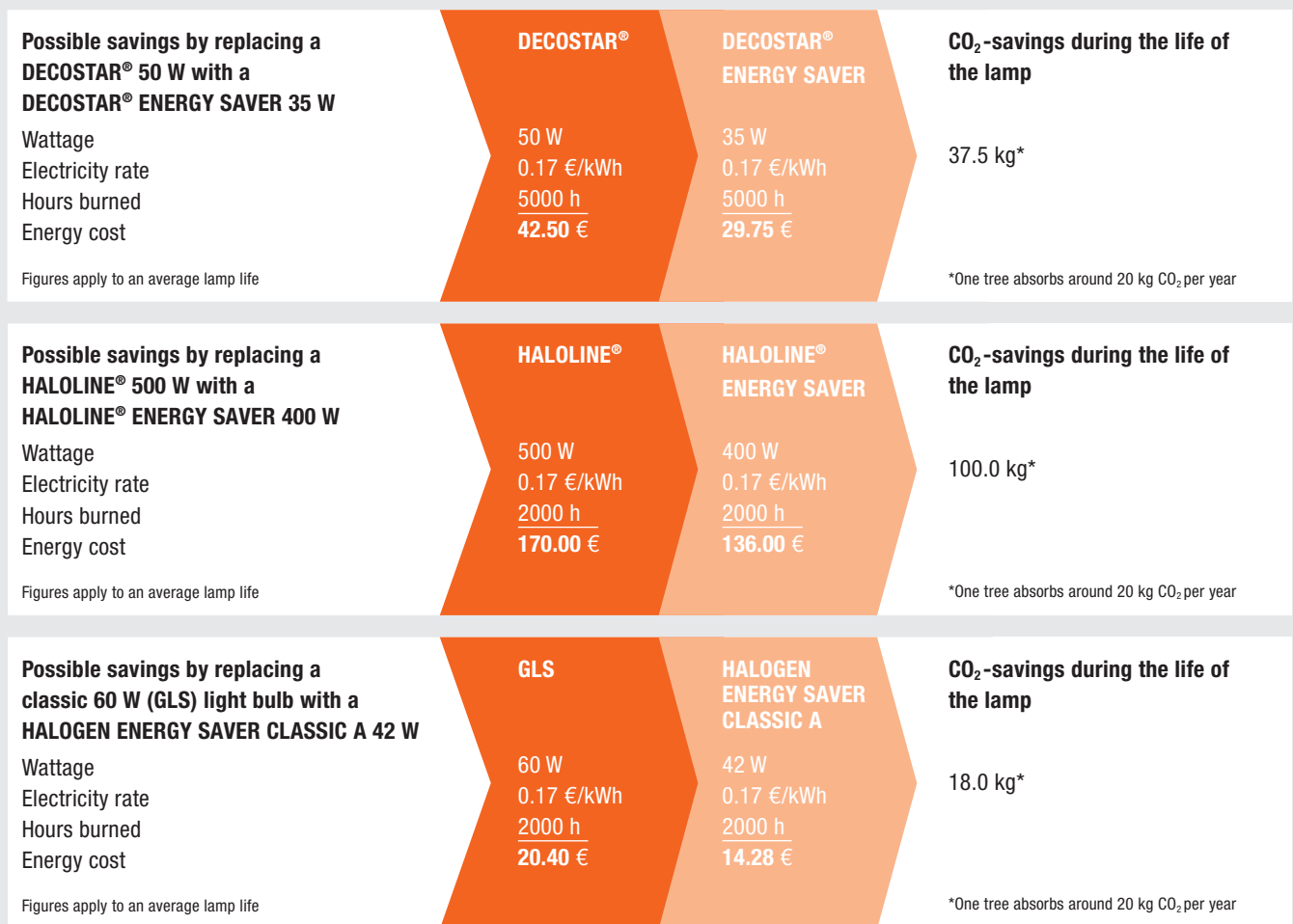
No compromise – HALOGEN ENERGY SAVER lamps from OSRAM offer excellent quality of light and energy savings



Lower costs, greater environmental protection: energy-saving lamps from OSRAM.

Count on us: Here's how much HALOGEN ENERGY SAVER lamps can save you.

The following examples illustrate the immense potential savings that can be achieved with HALOGEN ENERGY SAVER lamps from OSRAM in domestic and commercial applications – in terms of both costs and CO₂ emissions.



What this means in actual practice for example is that

- you can save **45.90 Euros** in electricity costs at home over a lighting period of 1000 hours in a year by replacing just fifteen 60 W light bulbs with 42 W HALOGEN ES CLASSIC A lamps;
- you can save **3,060 Euros** in electricity costs in your business over a lighting period of 4000 hours in a year by replacing three hundred 50 W reflector lamps with 35 W DECOSTAR® ENERGY SAVER lamps. The lower thermal output also means reduced air conditioning costs.

HIGH VOLTAGE

ENERGY SAVER



Attractive yet cost-effective feel-good light: halogen lamps in classic shapes.



HALOGEN ENERGY SAVER CLASSIC A

Halogen in the classic shape of a light bulb.

- 30 % energy savings¹
- Cost-effective halogen alternative for 1:1 replacement for classic light bulbs
- E27 screw base
- Average life time of 2000 hours
- Much lower CO₂ emissions¹
- Lower thermal output
- Color temperature approx. 2800 K
- Fully dimmable
- The same sense of light as with a classical light bulb

Standard light bulb (GLS)		HALOGEN ENERGY SAVER CLASSIC A
25 W	→	18 W ES
40 W	→	28 W ES
60 W	→	42 W ES
75 W	→	52 W ES
100 W	→	70 W ES
150 W	→	105 W ES



HALOGEN ENERGY SAVER CLASSIC B + BW

Halogen in the classic candle shape.

- 30 % energy savings²
- Cost-effective halogen alternative for 1:1 replacement for classic candle bulbs
- E14 screw base
- Average life time of 2000 hours
- Much lower CO₂ emissions²
- Lower thermal output
- Color temperature approx. 2800 K
- Fully dimmable

Standard light bulb (GLS) candle shape		HALOGEN ENERGY SAVER CLASSIC B
25 W	→	18 W ES
40 W	→	28 W ES
60 W	→	42 W ES

Standard light bulb (GLS) candle shape		HALOGEN ENERGY SAVER CLASSIC BW
40 W	→	28 W ES



HALOGEN ENERGY SAVER SPOT R50 and R63

Halogen in the shape of a spotlight.

- 30 % energy savings³
- Cost-effective halogen alternative for 1:1 replacement for conventional spotlight bulbs
- E14 (R50) and E27 (R63) screw bases
- Average life time of 2000 hours
- Much lower CO₂ emissions³
- Lower thermal output
- Color temperature approx. 2800 K
- Fully dimmable

Standard light bulb (GLS) spotlight		HALOGEN ENERGY SAVER SPOT R50
40 W	→	28 W ES

Standard light bulb (GLS) spotlight		HALOGEN ENERGY SAVER SPOT R63
60 W	→	42 W ES

¹ Compared with GLS

² Compared with GLS in candle shape

³ Compared with CONCENTRA® (GLS) as a spotlight

ENERGY SAVER



Displayed in the right light: modern lighting solutions with energy-saving halogen light.



OSRAM HALOPAR® 16 ENERGY SAVER

The OSRAM HALOPAR® ES for line voltage.

- 20 % energy savings⁴
- 1:1 replacement for standard halogen reflector lamps
- Average life time of 2000 hours
- Much lower CO₂ emissions⁴
- Lower thermal output
- With whole glass reflector for brilliant lighting effects
- Innovative bulb pinch technology for the discharge vessel and with integrated fuse function; complies with the safety requirements of IEC 60432-2
- Approved for use in open luminaires (to IEC 60598-1)
- No transformer required
- Color temperature approx. 2800 K
- Fully dimmable

OSRAM HALOPAR® Standard	OSRAM HALOPAR® 16 ENERGY SAVER
35 W	→ 28 W ES
50 W	→ 40 W ES



HALOLINE® ENERGY SAVER

Slim classic for inside and outside.

- 20 % energy savings⁵
- 1:1 replacement for standard halogen floodlight lamps
- Average life time of 2000 hours
- Much lower CO₂ emissions⁵
- Lower thermal output
- Ideal for emphasising and accentuating the structure of a room
- Can be used anywhere
- No transformer required
- Color temperature approx. 3000 K
- Fully dimmable

HALOLINE® Standard 74.9 mm	HALOLINE® ENERGY SAVER
100 W	→ 80 W ES
150 W	→ 120 W ES

HALOLINE® Standard 114.2 mm	HALOLINE® ENERGY SAVER
300 W	→ 230 W ES
500 W	→ 400 W ES



HALOPIN® ENERGY SAVER

Our smallest lamp for line voltage.

- 20 % energy savings⁶
- 1:1 replacement for standard halogen lamps
- Average life time of 2000 hours
- Much lower CO₂ emissions⁶
- Lower thermal output
- Extremely compact dimensions
- Robust filament design thanks to innovative, unique bulb pinch technology
- Complies with IEC 60432-2 thanks to integrated fuse function
- Approved for use in open luminaires (to IEC 60598-1)
- No transformer required
- Simple handling thanks to G9 plug-in base/holder system
- Color temperature approx. 2800 K
- Fully dimmable

HALOPIN® Standard	HALOPIN® ENERGY SAVER
40 W	→ 33 W ES



⁴ Compared with OSRAM HALOPAR® 16 STANDARD

⁵ Compared with HALOLINE® STANDARD

⁶ Compared with HALOPIN® STANDARD

LOW VOLTAGE

ENERGY SAVER



A real cool gem: DECOSTAR® ES saves up to 65 % costs.



HALOSTAR® ENERGY SAVER

Our smallest energy saver.

- 30 % energy savings⁷
- 1:1 replacement for standard pin base bulbs GY6.35 and G4 bases
- Long average life time of 4000 hours
- Significantly lower CO₂ emissions⁷
- Lower thermal output
- High luminous efficacy of up to 26 lm/W
- Meets IEC 60598 requirements: can be used in free-burning applications in open luminaires thanks to low-pressure design
- Axial filament for optimum directional light
- Gold-plated/platinized base pins for corrosion protection
- Fully dimmable

Standard pin-base lamp		HALOSTAR® ENERGY SAVER
20 W	→	14 W ES G4
35 W	→	25 W ES GY6.35
50 W	→	35 W ES GY6.35
75 W	→	50 W ES GY6.35
90 W	→	65 W ES GY6.35

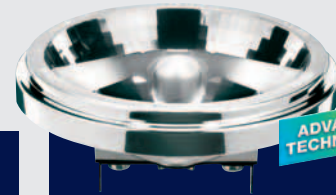


DECOSTAR® ENERGY SAVER

Our most beautiful energy saver.

- 30% energy savings⁸
- 1:1 replacement for standard dichroic reflector lamps
- Extra long average life time of 5000 hours
- Significantly lower CO₂ emissions⁸
- Lower thermal output
- Constant luminous intensity and constant colour location throughout the life of the lamp thanks to the longlife coating
- Integrated shield so the lamps can be used in open luminaires to IEC 60598-1
- Fully dimmable

Standard dichroic reflector lamp		DECOSTAR® ENERGY SAVER
35 W	→	20 W ES
50 W	→	35 W ES
65 W	→	50 W ES



ADVANCED TECHNOLOGY

HALOSPOT® 111 ENERGY SAVER

The power pack for accent lighting.

- 30 % energy savings⁹
- 1:1 replacement for standard 111 lamps
- Long average life time of 4000 hours
- Significantly lower CO₂ emissions⁹
- Lower thermal output
- Better quality lighting thanks to optimum illumination and reduced scatter
- More light thanks to precision-engineered shape and greater reflectance
- Loss of light due to dirt and impurities is reduced thanks to a smoother reflector surface
- Cap for reduced glare and ease of handling
- Meets IEC 60598 requirements: can be used in free-burning applications in open luminaires thanks to low-pressure design
- Fully dimmable

Standard 111 lamp		HALOSPOT® 111 ENERGY SAVER
50 W	→	35 W ES
75 W	→	50 W ES
100 W	→	65 W ES

⁷ Compared with HALOSTAR® STANDARD

⁸ Compared with DECOSTAR® STANDARD

⁹ Compared with HALOSPOT® 111



Guaranteed better light.

OSRAM ES halogen lamps can be operated with perfect results with the appropriate HALOTRONIC® control gear from OSRAM. In combination with HALOTRONIC® you get a 5 year guarantee on the ECG and 1 year on ES lamps from OSRAM (after registering the system and under certain conditions of use; for terms and conditions and information on registration go to www.osram.com/system-guarantee).

Save up to 65% costs with ES.

Calculate the savings on electricity and air conditioning costs for yourself. By using DECOSTAR® ES, HALOSPOT® 111 ES and HALOSTAR® ES ENERGY SAVER lamps you can save up to 65% costs compared with conventional halogen lamps. You can work out exactly how much you can save with the easy-to-use ENERGY SAVER analysis tool. The ENERGY SAVER analysis tool is easy to use: www.osram.com/irc

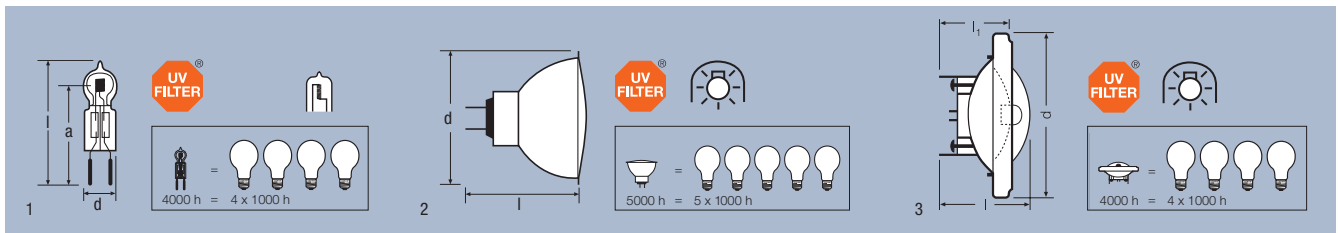


You can find additional tips and advice about your light solutions at:

www.osram.com/light-consultant



TECHNICAL DATA



Product reference	Product number	W	V	lm	cd	Im	t[h]*	Base	d max. (mm)	l max. (mm)	h (mm)	No.	Icons
-------------------	----------------	---	---	----	----	----	-------	------	-------------	-------------	--------	-----	-------

HALOSTAR® ES in low-pressure design, GY6.35

NEW

67427 ES ^{1,2}	4008321932655	14	12	320	4000	G4	10	33	22	1	40
64429 ES	4050300987262	25	12	500	4000	GY6.35	12	44	30	1	40
64432 ES	4050300615905	35	12	900	4000	GY6.35	12	44	30	1	40
64440 ES	4050300615936	50	12	1250	4000	GY6.35	12	44	30	1	40
64447 ES	4050300785400	65	12	1700	4000	GY6.35	12	44	30	1	40



DECOSTAR® 51 ES, dichroic reflector lamp with shield, Ø 51 mm, GU5.3

48860 ES SP	4050300620169	20	12	10	6000	..	5000	GU5.3	51	45	..	2	20
48860 ES FL	4050300620183	20	12	24	2300	..	5000	GU5.3	51	45	..	2	20
48860 ES WFL	4050300620206	20	12	36	1000	..	5000	GU5.3	51	45	..	2	20
48860 ES VWFL	4050300620220	20	12	60	450	..	5000	GU5.3	51	45	..	2	20
48865 ES SP	4050300516592	35	12	10	12500	..	5000	GU5.3	51	45	..	2	20
48865 ES FL	4050300516615	35	12	24	4400	..	5000	GU5.3	51	45	..	2	20
48865 ES WFL	4050300516639	35	12	36	2200	..	5000	GU5.3	51	45	..	2	20
48865 ES VWFL	4050300516653	35	12	60	1100	..	5000	GU5.3	51	45	..	2	20
48870 ES SP	4050300516677	50	12	10	15000	..	5000	GU5.3	51	45	..	2	20
48870 ES FL	4050300516691	50	12	24	5700	..	5000	GU5.3	51	45	..	2	20
48870 ES WFL	4050300516714	50	12	36	2850	..	5000	GU5.3	51	45	..	2	20
48870 ES VWFL	4050300516738	50	12	60	1430	..	5000	GU5.3	51	45	..	2	20



HALOSPOT® 111 ES, reflector lamp, Ø 111 mm, G53**

48832 ES SP	4050300656823	35	12	8	22500	..	4000	G53**	111	67	..	3	6
48832 ES FL	4050300656847	35	12	24	4500	..	4000	G53**	111	67	..	3	6
48835 ES SP	4050300656861	50	12	8	33000	..	4000	G53**	111	67	..	3	6
48835 ES FL	4050300656885	50	12	24	5800	..	4000	G53**	111	67	..	3	6
48835 ES WFL	4008321909237	50	12	45	2000	..	4000	G53**	111	67	..	3	6
48837 ES SP	4050300786070	65	12	8	45000	..	4000	G53**	111	67	..	3	6
48837 ES FL	4050300786094	65	12	24	8500	..	4000	G53**	111	67	..	3	6
48837 ES WFL	4008321909251	65	12	45	2800	..	4000	G53**	111	67	..	3	6

ECGs FOR LOW-VOLTAGE HALOGEN LAMPS

Product reference	Product number	V	A	Hz	W LAMP	W max.
-------------------	----------------	---	---	----	--------	--------

HALOTRONIC MOUSE®, compact design

HTM70/230-240***	4050300442310	230V -10%/240V+6%	0.27	50/60	70	20-70
HTM105/230-240***	4050300442334	230V -10%/240V+6%	0.41	50/60	105	35-105
HTM150/230-240***	4050300581415	230V -10%/240V+6%	0.57	50/60	150	50-150
HTN75/230-240I****	4008321073037	230V -10%/240V+6%	0.32	50/60	75	20-75
HTN75/230-240S****	4008321909329	230V -10%/240V+6%	0.32	50/60	75	20-75

HALOTRONIC® L, long design

HT70/230/12L****	4050300297453	230V -10%/+6%	0.29	0/50/60	70	20-70
HT105/230/12L****	4050300299662	230V -10%/+6%	0.46	0/50/60	105	20-105
HT150/230/12L****	4050300332123	230V -10%/+6%	0.65	0/50/60	150	50-150
HT210/230/12L****	4050300462257	230V -10%/+6%	0.90	0/50/60	210	50-210

HALOTRONIC® LF, long flat design

HT 120/230-240/12 LF***	4050300461342	230V -10%/240V+6%	0.48	50	120	35-120
-------------------------	---------------	-------------------	------	----	-----	--------

*Average life time

**If connection elements are used, an additional support is needed on the edge of the reflector

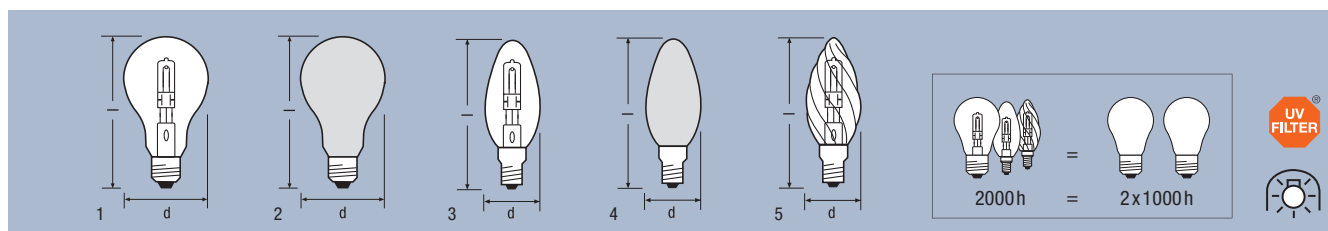
*** Can be dimmed with trailing-edge and leading-edge phase dimmers for inductive loads

**** Can be dimmed with trailing-edge phase dimmers

¹Available 08/2008

²Technical data are subject to change

TECHNICAL DATA



Product reference

Product number

W

lm

t(h)*



I max. [mm]

h [mm]

No.



HALOGEN ENERGY SAVER CLASSIC A with E27 base

NEW	Product reference	Product number	W	lm	t(h)*	Base	I max. [mm]	h [mm]	No.	Packaging	
	64541 ES A	4008321927163	18	200	2000	E27	55	97	72	1	20
	64542 ES A	4008321211828	28	345	2000	E27	55	97	72	1	20
	64543 ES A	4008321212078	42	630	2000	E27	55	97	72	1	20
NEW	64544 ES A	4008321927187	52	840	2000	E27	55	97	72	1	20
NEW	64547 ES A	4008321927200	70	1240	2000	E27	55	97	72	1	20
NEW	64548 ES A	4008321928153	105	1900	2000	E27	55	97	72	1	20

HALOGEN ENERGY SAVER CLASSIC A frosted with E27 base

NEW	Product reference	Product number	W	lm	t(h)*	Base	I max. [mm]	h [mm]	No.	Packaging	
	64541 FR ES A	4008321927224	18	200	2000	E27	55	97	72	2	20
	64542 FR ES A	4008321917287	28	345	2000	E27	55	97	72	2	20
	64543 FR ES A	4008321917300	42	630	2000	E27	55	97	72	2	20
NEW	64544 FR ES A	4008321927248	52	840	2000	E27	55	97	72	2	20
NEW	64547 FR ES A	4008321927262	70	1240	2000	E27	55	97	72	2	20
NEW	64548 FR ES A	4008321928177	105	1900	2000	E27	55	97	72	2	20

HALOGEN ENERGY SAVER CLASSIC B with E14 base

NEW	Product reference	Product number	W	lm	t(h)*	Base	I max. [mm]	h [mm]	No.	Packaging	
	64541 ES B	4008321927286	18	200	2000	E14	35	104	64	3	20
	64542 ES B	4008321212153	28	345	2000	E14	35	104	64	3	20
NEW	64543 ES B	4008321927309	42	630	2000	E14	35	104	64	3	20

HALOGEN ENERGY SAVER CLASSIC B frosted with E14 base

NEW	Product reference	Product number	W	lm	t(h)*	Base	I max. [mm]	h [mm]	No.	Packaging	
	64541 FR ES B	4008321927323	18	200	2000	E14	35	104	64	4	20
	64542 FR ES B	4008321917324	28	345	2000	E14	35	104	64	4	20
NEW	64543 FR ES B	4008321927347	42	630	2000	E14	35	104	64	4	20

HALOGEN ENERGY SAVER CLASSIC BW with E27 base

NEW	Product reference	Product number	W	lm	t(h)*	Base	I max. [mm]	h [mm]	No.	Packaging	
	64542 ES BW	4008321928191	28	345	2000	E27	35	104	64	5	20

* Average life time



Product reference

Product number

W

cd



t(h)*



d max. [mm]

I max. [mm]

No.



HALOGEN ENERGY SAVER SPOT R50 with E14 base

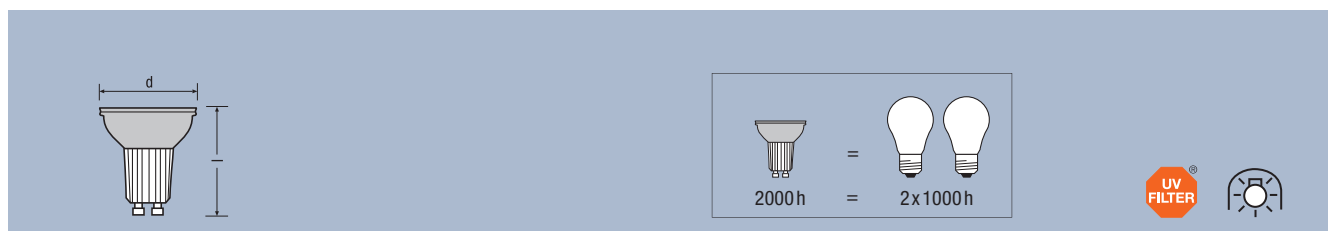
	64545 R50 ES	4008321212115	28	430	30	2000	E14	51	86.5	1	20
--	--------------	---------------	----	-----	----	------	-----	----	------	---	----

HALOGEN ENERGY SAVER SPOT R63 with E27 base

	64546 R63 ES	4008321212139	42	960	30	2000	E27	64	105	2	20
--	--------------	---------------	----	-----	----	------	-----	----	-----	---	----

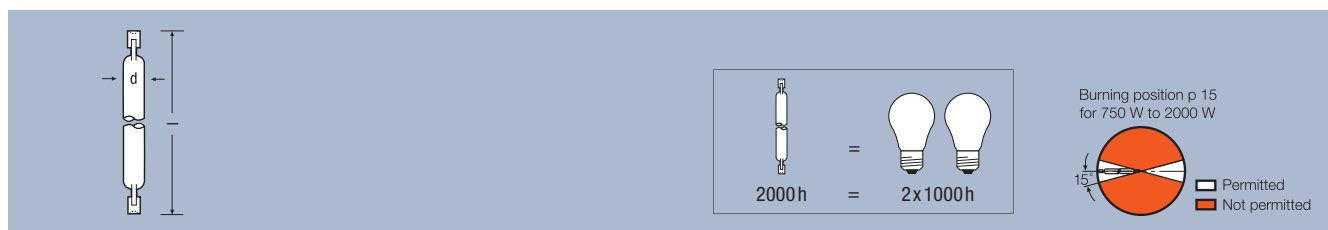
* Average life time

TECHNICAL DATA



Product reference	Product number	W	cd		t [h]*		d max. [mm]	l max. [mm]	
OSRAM HALOPAR® 16 ES with GU10 base									
64823 ES FL	4008321208767	40	900	30	2000	GU10	50.7	55	20

* Average life time

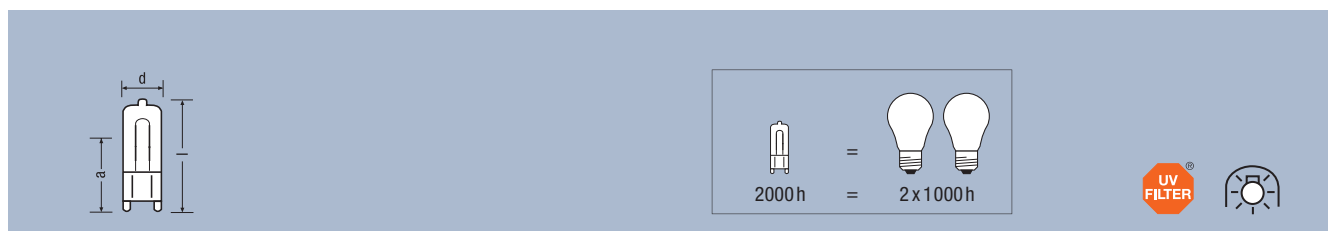


Product reference	Product number	W	lm	t [h]*		l [mm]	d [mm]		
HALOLINE® ENERGY SAVER									
Universal burning position									
NEW 64690 ES	4008321927743	80	1500	2000	R7s	74.9	12	2	20
NEW 64695 ES	4008321927729	120	2450	2000	R7s	74.9	12	2	20
64701 ES	4008321207692	230	5060	2000	R7s	114.2	12	2	20
64702 ES	4008321207715	400	9200	2000	R7s	114.2	12	2	20



Enclosed luminaires are needed with these halogen floodlight lamps for both indoor and outdoor applications (in accordance with IEC 60598). Fuse protection with the indicated values is recommended on the luminaire side (as per IEC 60357).

* Average life time



Product reference	Product number	W	lm	t [h]*		d [mm]	l max. [mm]		No.	
HALOPIN® ENERGY SAVER with G9 base										
clear										
66733 ES	4008321208668	33	460	2000	G9	14	43	22	1	20

* Average life time